

# **WEIGHING FOR GUIDEWAY “TW” SERIES**

**Instruction for installation and use**

# INDICE

<b>!!!IMPORTANT CAUTION!!</b> .....	<b>2</b>
<b>1. INTRODUCTION</b> .....	<b>3</b>
<b>2. TW and TWS INSTALLATION</b> .....	<b>4</b>
2.1 TW DRAWING .....	5
<b>3. MAINTENANCE AND REPARATIONS</b> .....	<b>8</b>
3.1 FOR OBTAIN EXCELLENT PERFORMANCE .....	8
3.2 BREAKDOWN AND OVERLOAD .....	8
<b>4. 6-POLES SHIELDED CABLE</b> .....	<b>9</b>
<b>DECLARATION OF CONFORMITY</b> .....	<b>10</b>
<b>WARRANTY</b> .....	<b>10</b>



## !!!IMPORTANT CAUTION!!



**Place the weighing module inside a room where are respected the following conditions:**

- *Plain and levelled surface of stand,*
- *Stability and without vibration,*
- *Absence of dusts or aggressive gas,*
- *Absence of air current,*
- *Moderate temperature and humidity (don't expose to direct sunlight or near heat source).*

**Don't solder,** drill or modify the structure without consult the seller. Possible damage or alteration will undo the terms of warranty.

If the location of use is a damp and wet environment, the installation need to be performed in order to **avoid stack or stagnation and/or rubble inside structure.**

The weighing module need to be connected to the weighing indicator through the cable from the junction box following the instruction of the weighing indicator.

**Don't step on,** squash or expose to heat source the shielded cable for connection.

**DON'T INSTALL INSIDE ENVIRONMENT WITH EXPLOSION RISK.**

(Unless it wasn't expected purposely)

Don't use solvents for the cleaning.

# 1. INTRODUCTION

All the weighing modules are built with high quality material and with a calibration method that grants the maximum reliability and precision for weighing during the time. The weighing module is composed from Structure of tubular AISI type 304 stainless steel complete of fixing accessory in stainless steel. This structure is composed from one legal for trade loading cell in aluminium with IP66 protection (mod. TWS) or with three legal for trade stainless steel loading cell with IP68 protection (mod.TW) and complying with OIMLR60 C3 norms. TW have equalized loading cell through junction box with IP67 protection and equipped by 6-poles shielded cable around 10 meters long complete with connectors for weighing indicator.

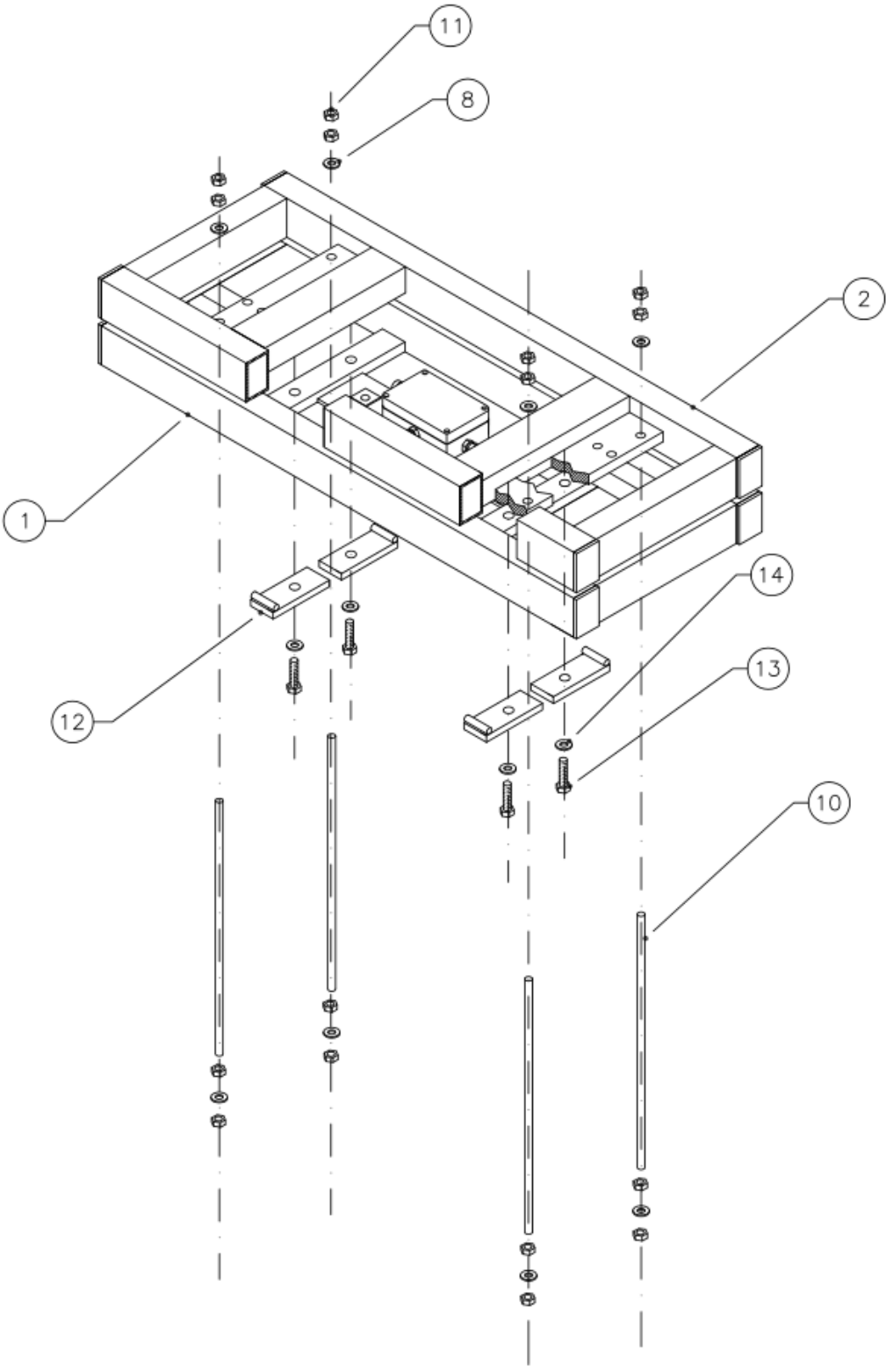
Air guide way scales are reliable and easy to use for meat's industry. Weighing modules have reduced size and they are easily adaptable to every kind of guide way. They are totally oscillation exempt, they weigh quickly and precisely.

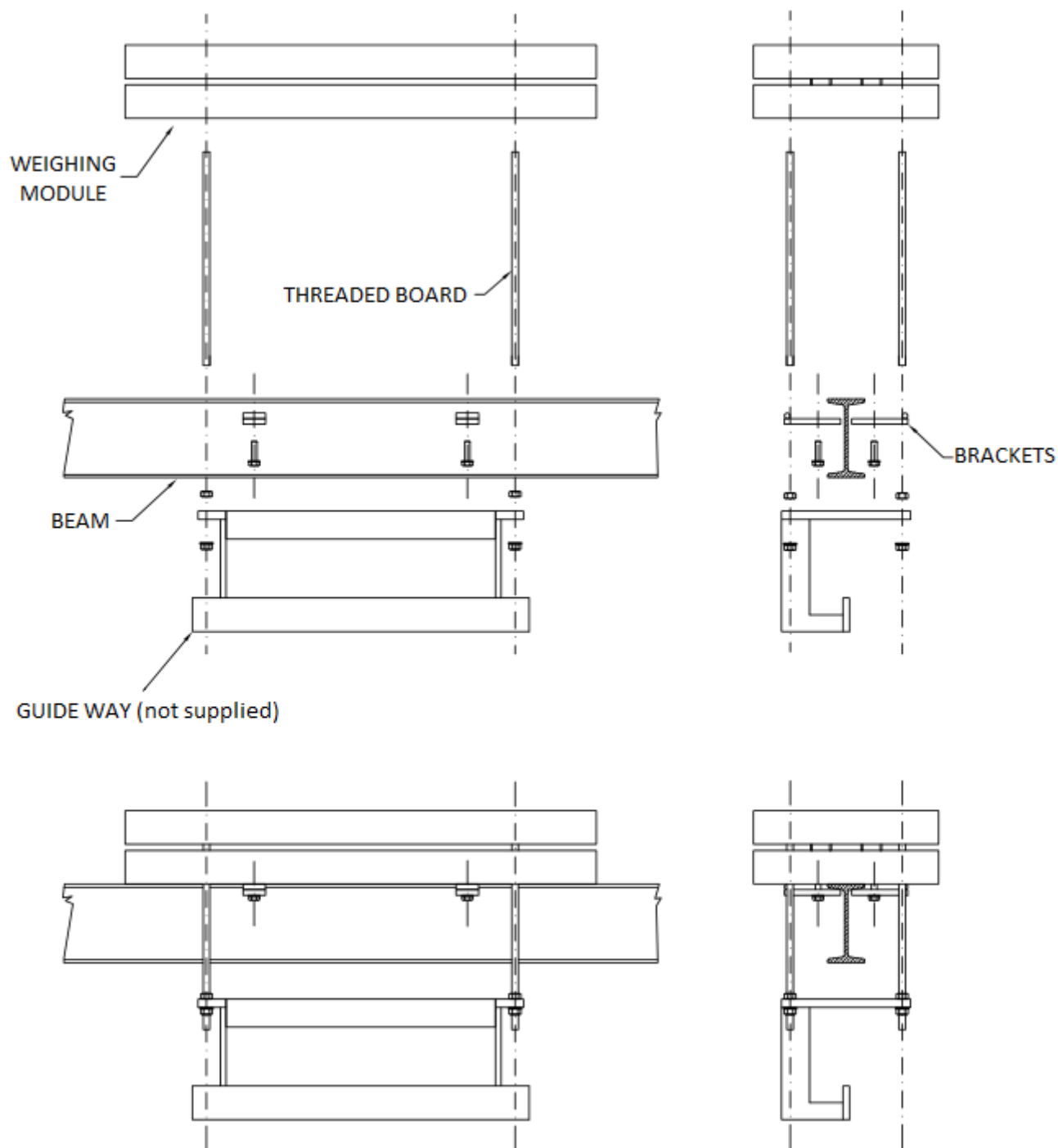
## 2. TW and TWS INSTALLATION

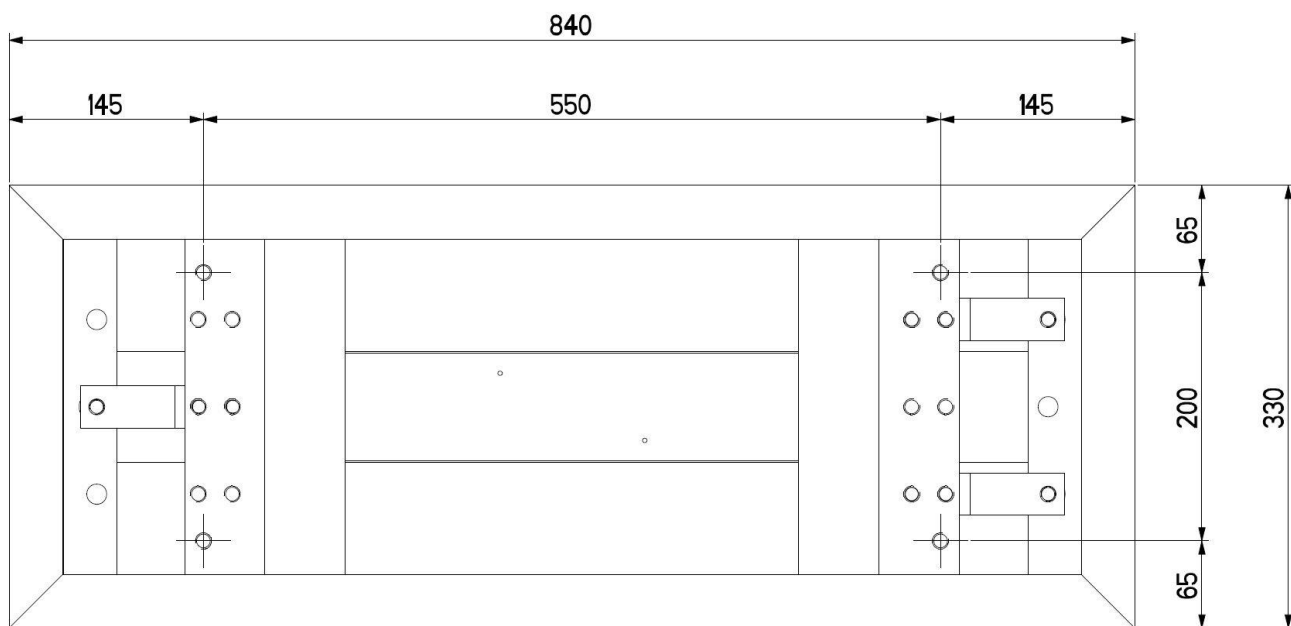
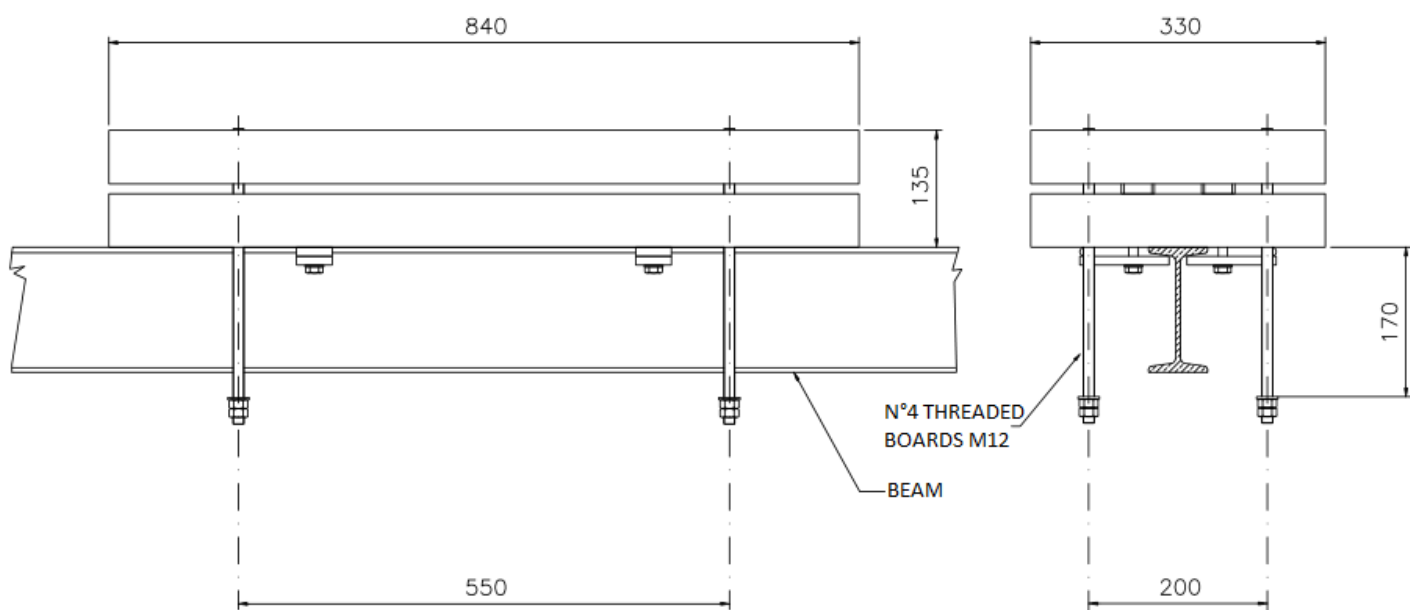
- A) Place the **WEIGHING MODULE (1)** in the place of use;
- B) Fix the **WEIGHING MODULE (1)** above the beam, screwing the bolts (13), the brackets (12) and the washers (14);
- C) Screw the **THREADED BOARD (10)** to **WEIGHING MODULE (1)** and screw above the **THREADED BOARD (10)**, two **NUTS (11)** and a **WASHER (8)** for every threaded board.
- D) Use a nut and a lock nut to fix the GUIDE WAY to **THREADED BOARDS (10)** (**GUIDE WAY not supplied**, installation at the expense of customer);
- E) Wire up the shielded cable came from junction box to weighing indicator using the instruction of the indicator. The cable need to be wired in order to don't interfere with the weighing because it can cause resistance and will influence the measure. The colours and the function of the single wires of the cable are reported on the junction box.

**NOTE:** The weighing module isn't provided with any kind of block for transport.

2.1 TW DRAWING









## 3. MAINTENANCE AND REPARATIONS

### 3.1 FOR OBTAIN EXCELLENT PERFORMANCE

- Keep the weighing module clean. If dirt and dust accumulate on it, clean it with a damp rag or with normal cleaning products (**don't use SOLVENTS e ACIDS**).
- Prevent the platform to be subjected to impact, could cause serious damage.

### 3.2 BREAKDOWN AND OVERLOAD

Permanently unplug the platform if:

- It show sign of damage;
- It stop to work;
- It was overloaded over the passable limit.

## 4. 6-POLES SHIELDED CABLE

### Colour's meaning

<b>EXCITEMENT +</b>	<b>Brown</b>
<b>SENSE +</b>	<b>Green</b>
<b>EXCITEMENT -</b>	<b>Grey</b>
<b>SENSE -</b>	<b>White</b>
<b>SIGNAL +</b>	<b>Pink</b>
<b>SIGNAL -</b>	<b>Yellow</b>
<b>GROUND</b>	<b>Orange</b>

The cables come from the junction box where they are connected, through equalization board, to platform's cells. Cables can have different colours.

## **DECLARATION OF CONFORMITY**

This device complies with the essential standards and other pertinent standards of applicable European regulations. The Declaration of Conformity is available on the Website [www.diniargeo.com](http://www.diniargeo.com).

## **WARRANTY**

The warranty is valid for TWO YEARS from date of consignment of the instrument and covers free of charge labour and spare parts for INSTRUMENTS RETURNED AT THE CUSTOMER'S CHARGE to the VENDOR'S PREMISES and for faults that are NOT attributable to the customer (for example, improper use) and that have NOT been caused during transport.

If, for any reason, the repair work is requested (or necessary) at the actual workplace, the customer will be charged for the transfer expenses of the technician: travelling time and expenses and possibly board and lodging.

If the instrument is consigned by courier, the transport expenses (there and back) will be charged to the customer.

The WARRANTY IS ANNULLED if the faults are due to unauthorised personnel using the weigh bridge or due to connection to equipment installed by others or due to the incorrect connection to the power supply mains.

Indemnity is EXCLUDED with regard to direct or indirect damages caused by the customer following failed or partial operation of the instruments or systems sold, even during the warranty period.

## **STAMP OF THE AUTHORISED SERVICE CENTRE**

